

**NUVO**  
CONSULTING



Building Our  
Africa. Together.

# Company Profile



---

## Nuvo Consulting

 [www.nuvoconsulting.com](http://www.nuvoconsulting.com)

 [info@nuvoconsulting.co.za](mailto:info@nuvoconsulting.co.za)

 4 Sandown Valley Crescent, Sandton

---

## Innovative & Collaborative

Our approach strikes a perfect balance between cost, time and quality.

---

Strictly Confidential, For Recipient Only

# About Our Company

## A brief history about Nuvo Consulting

Nuvo Consulting is a leading construction consultancy firm, driven by innovation at the core of our services. We approach each project with a keen understanding of the unique business case and specific outcomes required by our clients. Our team is committed, precise, and detail-oriented throughout the entire project lifecycle, from initiation to final delivery.

With an entrepreneurial mindset and extensive experience rooted in the rich soils of the African continent, we think beyond traditional boundaries. This approach enables us to explore opportunities that enhance not only cost efficiency and project delivery but also the overall impact and outcomes of the project within its geographical context.

**Bringing ideas and innovation to life through project management.**





# Approach

Our approach strikes a perfect balance between cost, time, and quality, ensuring the utmost protection for our clients.. Our team is dedicated to enhancing and further developing our clients' business opportunities, fostering significant prospects for expansion and increasing the growth potential of their return on investments. With a focused, balanced, and outcome-oriented approach, our team is committed to safeguarding the results of your investments

## **Providing comprehensive development, project, cost and construction management services across Africa.**

### ● Our Philosophy

Our approach blends optimistic realism with an energetic, forward-thinking strategy. Backed by over 30 years of industry-leading experience, our proactive attitude positions us at the forefront of delivering successful projects.

### ● Our Mission

Fostering proactive interactions with clients, strengthening partnerships through loyalty and transparency, and actively engaging to build long-lasting relationships.

### ● Our Vision

With an energetic approach and a commitment to adaptability, we foster positive synergy that enables us to better serve our clients and position ourselves at the forefront of our industry.

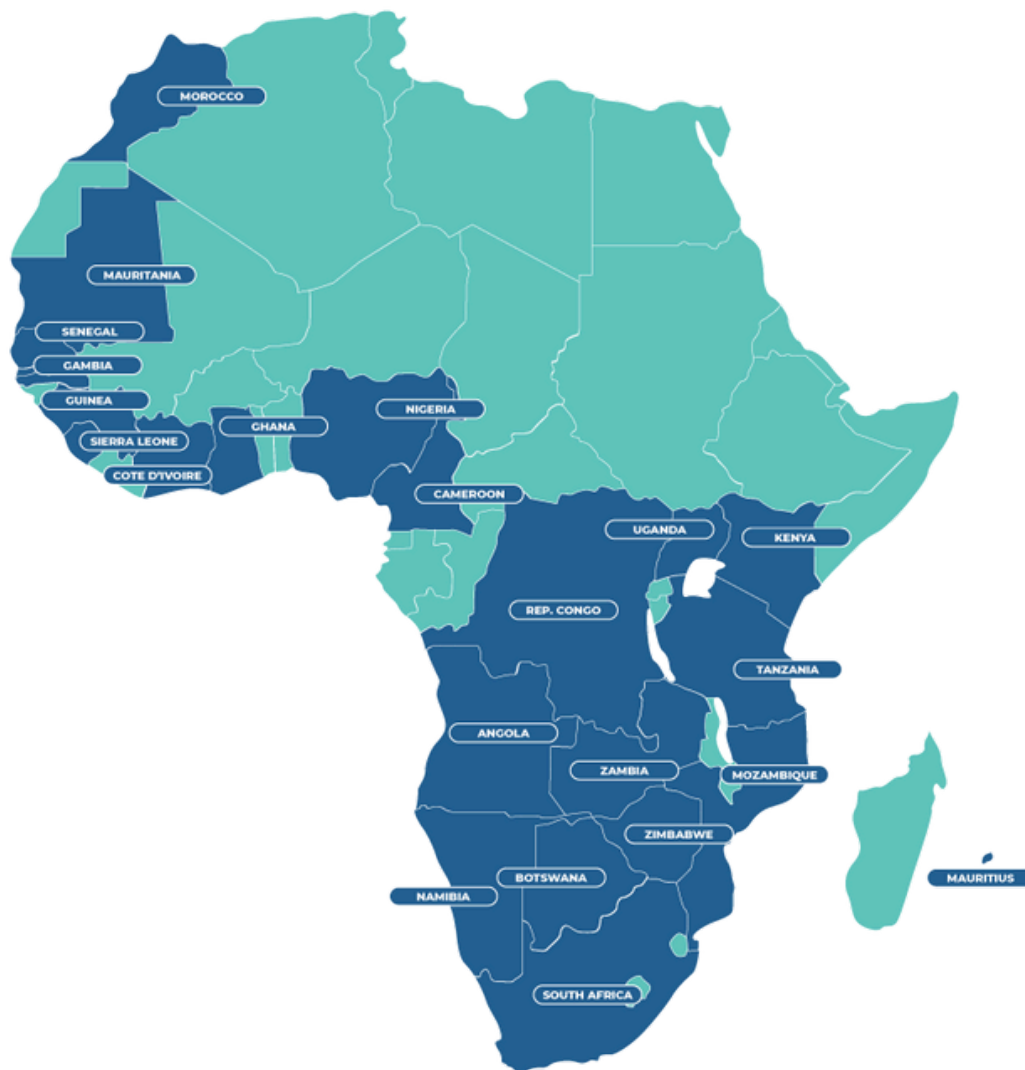
### ● Our Promise

Driven by our passion for the African continent and our strong belief in the growth potential of its people, we are dedicated to leveraging our knowledge and enthusiasm to build successful partnerships and deliver enduring projects across Africa.



# Our Footprint

We are a construction consultancy firm that places innovation at the core of our services, with a tailored approach to each unique business case and the specific objectives of our client's projects. Our commitment to persistence, precision, and attention to detail ensures excellence from project inception to final delivery







# Our Leadership Team

At Nuvo Consulting, our leadership team combines decades of expertise in project management, architecture, and sustainable development to deliver innovative and impactful solutions across Africa. With a shared commitment to excellence, our leaders drive projects that shape industries and create lasting value for clients.

## ● Expertise

The team boasts extensive experience across diverse industries, including architecture, project management, and sustainable development.

## ● Innovation

A commitment to forward-thinking solutions ensures cutting-edge approaches to every project.

## ● Collaboration

The team's strength lies in its ability to work seamlessly together, fostering a culture of cooperation and shared vision.

## ● Sustainability

A strong focus on green building practices and eco-friendly designs reflects the team's dedication to environmental stewardship.



**Nick Brown, Managing Director**

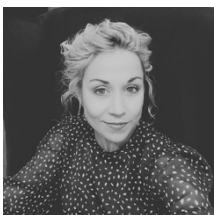
Nick Brown, Managing Director of Nuvo Consulting, brings over 43 years of experience in civil engineering and project management, having spearheaded large-scale developments across Africa. His career highlights include leading iconic projects such as the Douala Grand Mall in Cameroon and Terminal 3 of Kotoka International Airport in Ghana, earning accolades for excellence in project management.

**Daleen Visagie, Senior Project Manager & Project Co-ordinator**

Daleen Visagie, a seasoned professional in the construction industry, has held pivotal roles in project management and business development, contributing to the successful delivery of numerous large-scale projects. Her expertise encompasses strategic planning, client relations, and operational excellence, making her an invaluable asset to the leadership team.

**Neels van Rooyen, Senior Project Manager**

Neels van Rooyen, Senior Project Manager at Nuvo Consulting, is a registered architect with over 20 years of experience, specializing in sustainable design and eco-tourism. As a GBCSA Accredited Professional, he has led diverse projects across Africa, including hospitality developments like the Radisson Hotel Lakeview in Kampala and exclusive lodges in South Africa.

**Johanita Burger, Consultant**

Johanita Burger is a seasoned professional with extensive experience in project management and business development. She has a proven track record of successfully leading complex projects and fostering client relationships across various industries.



# Our Solutions

**Nuvo Consulting is committed to creating long-term value for its clients, investors, and stakeholders—including host countries and local communities—by maximizing the economic, social, and environmental benefits of its projects.**

## ● Construction Management

Construction Management is responsible for delivering clients' project requirements directly on-site. With dedicated on-site resources, our team is focused on ensuring daily progress, quality, safety, and comprehensive reporting throughout the construction process.

Our services include:

- Management and coordination of contractors and subcontractors
- Construction progress reporting and monitoring
- Scheduling of resources, goods, and materials on-site
- Ensuring alignment with the project schedule and budget
- Implementing remedial actions to address schedule or budget variances
- Ensuring compliance with all construction governance and reporting requirements

Our approach ensures seamless execution and successful project delivery.





## ● Project & Program Management

We specialise in serving private clients with extensive expertise in community infrastructure, including facilities for education, healthcare, and leisure. We provide the following services: Programme Planning and Management Master Scheduling/Schedule Analysis Master Budget Development Design Management Delivery and Contracting Strategies Change Order Management.

## ● Procurement

We objectively request, assess, and adjudicate the supply of products or services for your project, offering unbiased advice and ensuring competitive prices and superior service from our suppliers on your behalf. Services include:

- Identify Goods or services needed
- Adjudicate suppliers
- Negotiate contract terms with selected suppliers
- Finalise purchase orders
- Receive invoices and process payments
- Delivery and audit of orders
- Maintain accurate record of invoices

## ● Cost Management

We align ourselves around client sectors to provide industry-relevant advice and specialised expertise. Our integrated approach creates custom-made client teams that bring together technical delivery experts, strategists and other in-house specialists. As cost management consultants, we have access to unprecedented cost data on projects across contexts and sectors.

Along with our extensive experience and specialist knowledge of end markets and building types, we can provide more accurate advice on the cost implications of client requirements. Representative Services:

- Cost Modelling and Cost Planning
- Benchmarking
- Value and Risk Analysis
- Life-cycle Costing
- Procurement
- Post-contract Cost Management
- Final Account Settlement

## ● Change Management

Change management is a structured approach designed to navigate the transition or transformation of organizational goals, core values, processes, or technologies. It recognizes that during periods of resistance, employees may struggle to move away from established practices and fully embrace new initiatives. Our change management services include:

- Preparing the organization for change: Building readiness and aligning stakeholders.
- Crafting a vision and plan for change: Developing clear strategies and actionable roadmaps.
- Implementing changes: Executing initiatives effectively and efficiently.
- Embedding changes into company culture and practices: Ensuring sustainability through integration.
- Reviewing progress and analyzing results: Monitoring outcomes to refine and improve processes.

This comprehensive approach ensures a smoother transition and long-term success.

## ● Turnkey Projects

Our team provides end-to-end project solutions, guiding you through every stage of your project lifecycle. Leveraging our extensive network of trusted partners, we deliver a fully integrated turnkey solution under our management and oversight. This approach ensures seamless execution with a single point of accountability and contact for the entire project. Our turnkey services include:

- Space Assessment and Planning: Evaluating and optimizing space for functionality and efficiency.
- Interior Design: Crafting tailored designs to align with your vision and requirements.
- Furniture Procurement and Placement: Sourcing and positioning high-quality furnishings.
- Fit-Out Works: Managing all construction and installation activities to completion.
- Project and Construction Management: Overseeing every aspect of project execution to ensure quality and efficiency.
- Cost Management: Monitoring and controlling budgets to maximize value.

This comprehensive approach ensures a streamlined and stress-free project delivery.

## ● Advisory & Due Diligence

Our Advisory team offers tailored, solution-oriented services to support clients at any stage of a project—whether for specific intervals or throughout its entire duration. Backed by extensive expertise in both field operations and project management, we deliver value at organizational and execution levels. Nuvo Consulting collaborates with stakeholders across all tiers, including Boards, Steering Committees, and onsite project management teams, ensuring comprehensive support. Our advisory services encompass:

- Project auditing
- Project monitoring and oversight
- Scheduling and cost performance validation
- Compliance monitoring
- Independent quality assessments and reviews
- Inspections and cost auditing
- Planning and scheduling
- Procurement assistance
- Implementation and management of project controls
- Technical due diligence reviews and reporting
- Project close-out reviews

With our holistic approach, we empower clients to achieve their project goals efficiently and effectively.





# Our Clients

**AECOM**



Givaudan<sup>®</sup>



**HALLIBURTON**



**TSEBO**



# Project Experience

With our industry-leading knowledge and an excess of 30 years experience, NUVO Consulting is proudly able to reference a host of successfully completed projects.



**Construction of phase 2 for 10 new classrooms for the ADvTECH / Makini group of Schools, located in the Kisumu region of Kenya, alongside Lake Victoria.**

Following the successful completion of eight classrooms in early 2024, demand increased for additional facilities to accommodate 300 more students. To meet Makini School's enrolment deadlines for the January 2025 intake, a fast-track construction approach was required.

Given Nuvo Consulting's proven expertise in managing light gauge steel (LGS) structures during Phase 1 and on other schools in Nairobi, ADvTECH/Makini approved the use of this construction method once again. This decision enabled us to meet the stringent timeline while maintaining the high standards expected by the client.

<b>Duration</b>	5 Months, completion December 24
<b>Size</b>	500m2
<b>Number of pupils</b>	300



### **Construction of a new sports facility for the ADvTECH / Makini group of Schools, at the Cambridge Campus in Nairobi.**

Nuvo Consulting successfully managed the construction of a multi-use sports field, complete with grandstands and associated facilities, on the southern side of the campus, tailored to meet the requirements of the Government Curriculum.

In response to increasing demand from parents on the northern side of the campus, which operates under the Cambridge Curriculum, ADvTECH/Makini approved the design and construction of a similar sports facility. This project includes a sports field, multi-use courts, and associated ablution facilities, catering to hockey, soccer, tennis, basketball, and netball. The field will feature a FIFA-approved AstroTurf surface and is scheduled for completion in February 2025.

<b>Duration</b>	5 Months, completion December 24
<b>Scope</b>	A multi-use sports field, ablutions, and multi-use courts
<b>Size</b>	Field – 1200m <sup>2</sup> Ablutions – 100m <sup>2</sup> Courts – 750m <sup>2</sup>



### **Radisson Hotel - Lome, Togo**

Finishing Programme Site Management of a 250 Key hotel in Togo. Based on Site, Nuvo Consulting with the Contractor, representing the Client, managed the finishing of the hotel to a No-Later-Than-Date for a strategic Government conference.





Covered patio and  
Viewing Deck



New Multi-use tennis,  
netball, and basketball  
courts



New LGS classrooms

**Crawford Campus in Tatu City Kenya, the scope was to convert the existing accommodation suites into classrooms for 350 students, provide new classrooms alongside the existing building for 120 students, a new kitchen, a viewing deck, Ferrari sails over the internal atrium, a multi-use sports facility for tennis, basketball, netball and cricket practice nets.**

Tatu City, home to Phase 1 of the Crawford Campus, has become a highly sought-after educational destination, with growing demand over the years for additional classrooms and sports facilities. Between 2022 and 2024, Nuvo Consulting successfully managed these enhancements. Building on this success, ADvTECH approved Phase 2 of the project, which includes the construction of 16 new brownfield classrooms, scheduled for completion in 2025.

The design leverages a lightweight steel structure, enabling a streamlined seven-month construction timeline to meet the enrolment intake for September 2025. Tatu City, where Phase 1 of the Crawford Campus is located, is a sought-after school destination, and demand has grown over the years for additional classrooms and sport facilities. Nuvo Consulting completed these improvements between 2022 – 2024.

ADvTECH approved the construction of Phase 2, consisting of 16 new Brownfield classrooms for completion in 2025. The design is for a lightweight steel structure, allowing us to achieve the 7-month construction duration, and achieve the intake applications for Sept 25.



## **Hewlett Packard Enterprises, South Africa, 2019**

Nuvo Consulting was appointed by HPE as Full-Turnkey Management Agent for the consolidation, refurbishment and reinstatement of the Hewlett Packard Industries current premises and the return of unused office to the Landlord for new tenants. This function included all design, procurement, and delivery of the office space within a live and operational office environment in 2 phases.

<b>Duration</b>	5 Months
<b>Size</b>	2000m2
<b>Project Value</b>	R23,206, 593 / \$ 1,627,390.81



## **Radisson Park Inn, Zambia, 2020**

Nuvo Consulting was nominated as a specialist sub-consultant by the Radisson Group, to the client, Public Service Pension Fund and appointed by China State Construction Engineering Corporation (CSCEC) as a Sub-Consultant to oversee the works on the Radisson Park Inn Lusaka. Nuvo Consulting coordinated the various local and foreign consultants and contractors' teams working on the hotel to complete the hotel to the required Radisson specification.

<b>Duration</b>	12 Months
<b>Size</b>	150 Keys



### **River View Park, Zambia, 2020**

The National Pension Scheme Authority (NAPSA) engaged the Zambia National Service on 11th June 2020 as the main contractor for the Infrastructure Implementation Phase 1 for the proposed River View Park project which is located in the east of Lusaka along Twin Palm Road, on a 607Ha virgin piece of land. The Vision for the project is to create a legacy of sustainable urban mixed-use development

founded on the principles of design excellence, environmental responsibility, and social well-being within a viable economic, legislative and governance framework. The purpose of this property development is aimed at ensuring capital preservation and growth of the NAPSA member's fund.

<b>Duration</b>	638 Days
<b>Size</b>	607Ha
<b>Project Value</b>	ZMW478, 159, 473.19



### **Unilever, Johannesburg, South Africa, 2020**

Nuvo Consulting was appointed by Unilever South Africa to offer project management and light cost management watching brief services for the refurbishment of the new offices at 61 Katherine Street, Sandton. The project included managing the Turnkey contractor, Unilever's IT, security (CCTV & Access control) including relocation of the existing furniture to the new offices.

<b>Duration</b>	1 year
<b>Size</b>	1500 m2
<b>Project Value</b>	ZAR10 000 000





### Smollen, South Africa, 2020

Nuvo Consulting was appointed by Smollen as the Lead Consultant, including Construction and Cost Managers for their new Durban offices, located in La Lucia KwaZulu Natal. A large component of this project was to facilitate the installation of fire life safety systems and separation of the new space, within an existing tenanted environment. Nuvo Consulting managed this project from conception, through

to final completion, including ensuring regulatory approvals and occupancy was certified in good time.

<b>Duration</b>	5 Months
<b>Size</b>	9 000m2



### Dfid & EU Solar Nigeria Program, Nigeria, 2019-2021

The Solar Nigeria Program rolled out by the European Union & DFID UK across various states within Nigeria provided constant power to rural Hospitals, Healthcare centres and Schools. Nuvo has been involved with this project from Phase 2 - 6. Project is evidence that NUVO Consulting is sufficiently skilled to ensure a successful outcome within an environment of extreme

high-risk security locations and in extreme regions of the continent.

<b>Duration</b>	3 Years
<b>Size</b>	Multiple Sites



### **Hilton Hotel - Douala, Cameroon**

Design and Start-up Programme Management for this 235 Key 5 Star Hotel for Hilton World Wide. The role included Management of the relationship between Design Professionals and the Hotel Operator as well as Management of all information flow and design deliverable up to Site Establishment.



### **Radisson Boutique Hotel - Abuja, Nigeria**

200 key boutique hotel, in progress Taking over a grey box / shell and core structure already built, and delivering a full-service design, engineering and build solution to both the developer, and to the operators standards. Completion for March 2022



### **The President Hotel - Cape Town, South Africa**

Fit Out Project Managers for the soft refurbishment of the hotel including the architectural finishes, FFE & OSE goods.



## **Laburnam Courts Apartments & Hotel - Kampala, Uganda**

Fit Out Project Managers for a 364 key refurbishments including a new boutique hotel and spa. The scope included design management, procurement of the Architectural, FFE & OSE goods procurement, logistics and installation.



## **Park-Inn - Lusaka, Zambia**

Nuvo Consulting appointed as the main infrastructure Project and Construction Managers for the mixed-use development, which comprises Office, Residential, Office and Retail.



## **Radisson Hotel - Banjul, Gambia**

The new Radisson Blu Resort is located on a 17,5-hectare property with a 470m Atlantic sea front. The 462-key resort facilities cover approx. 50 000m<sup>2</sup> including the Main Reception building, Conference facilities, Spa and Wellness Centre, various pools as well as restaurants and bar facilities. The accommodation includes sea view rooms, garden view rooms, Presidential Apartments, and 10 exclusive Royal Villas,

along with 3 gatehouses and 2 welcome pavilions. The resort's design respects the environmentally sensitive shoreline and existing vegetation, including ancient Baobab trees, in collaboration with The Gambian Authorities. Nuvo Consulting is responsible for project management, design, coordination, and construction from inception to completion.





## Radisson Hotel - Kampala, Uganda

The Radisson Lakeview project aimed to increase guestroom capacity and enhance back-of-house (BOH) facilities. Existing apartment buildings were restructured to provide 118-136 keys, aligning with Radisson's standards. A new circulation core was added for independent access.

BOH areas were divided into two main sections: the extended Existing Tank building for housekeeping and staff facilities, and the adapted Circular building (clubhouse) basement for kitchen and delivery spaces, while the clubhouse now serves as a public venue with dining and meeting options that capitalize on views.

Block D's lower ground floor was transformed into a gym and spa connected to the pool, and the reception area links key facilities, including conference spaces. Architectural updates include timber and aluminum cladding for the entrance and reception buildings, arches for the clubhouse, and minimal façade treatments for guestroom structures. The design fosters a cohesive experience for guests, creating a serene oasis in Kampala.



## Maputo Hotel and Mixed Development

Nuvo Consulting appointed as the developers Project and Construction Managers on a mixed-use development, that included a Hilton Hotel, in addition to Retail and Office.



# Thank You

Because, we're here  
to help

Contact us for all your project  
management and construction  
needs.

## Address

4 Sandown Valley Crescent, Sandton,  
Johannesburg, South Africa

## Telephone

+27 82 458 1891

## Website

[www.nuvoconsulting.com](http://www.nuvoconsulting.com)

## Email

[info@nuvoconsulting.co.za](mailto:info@nuvoconsulting.co.za)

